



***REDPACK***®

**SERVICES AND RATES 2023**



# CONTENTS

Take your business further	2
Structure	3
Sustainability and Integrity	4
Logistics solutions	5
Technological innovation	6
E-commerce	7
Retail	7
Domestic Services	8
Express service	9
Ecoexpress service	10
Metropolitan service	11
Prepaid	12
Domestic rate areas	13
Domestic additional services and charges	17
International Services	19
Ecoexpress U.S.	22
Export	23
Import	24
International rate areas	25
International additional services and charges	26
Prohibited Items	27
Dangerous materials	28
Prepare your shipment step by step	29
Maximum and minimum weights for international shipments	29
Packaging solutions	30
Service Points	31

# TAKE YOUR BUSINESS FURTHER

We are a **mexican company**, with operation for **28 years** nationwide, offering **logistics solutions** according to the needs of each client.

With the purpose of being the main logistic support in the supply chain for businesses, we boost their competitiveness and growth through the participation in different industries, among which e-commerce, technology and manufacturing stand out within and outside the country.

Being part of **Grupo Traxión**, Redpack has the support of a diversified and flexible business model. It consolidates a portfolio of services and solutions at a national and international level, among which the **Courier, Parcel and Consolidated Cargo**.

Redpack customers benefit from the best practices, economies of scale and synergies that it achieves with all the group's business units.

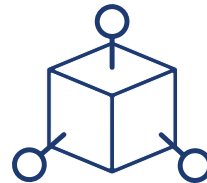


# STRUCTURE



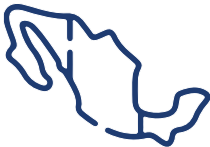
**+1,700**

collaborators



**7 Centers**

operative centers equipped with state-of-art technology



**113**

stations strategically located throughout Mexico



**+860**

dedicated vehicles for ground and last miles links



**+400**

contact points



**+18,000**

zip codes



**56**

ground routes



**86**

air routes

# SUSTAINABILITY AND INTEGRITY

At Redpack we take care of each of our operations taking into account the economic, environmental and social priorities of our environment.

We approach each action responsibly towards our clients and users; adhering to the law and best practices; and seeking the professional development of our collaborators.

At Redpack we adhere to corporate sustainability and integrity policies.



# LOGISTICS SOLUTIONS





# TECHNOLOGICAL INNOVATION

# E-COMMERCE

We know that business trends have changed in market. Redpack adds another achievement in the implementation of continuous improvement, with a new version of the API in english that translates into an advantage for the generation of new international business.

## Benefits for your business

- Reduces system integration time.
- Facilitates the implementation and attention of customer doubts.
- Mitigates the risk of obsolescence.
- Facilitates interactions with large customers.
- Targets international markets.
- In line with OWASP international safety standards.
- SOAP is maintained, without the risk of obsolescence or migration costs.

## Web services



### Documentation

Receives basic data to generate waybills.



### National Coverage

Returns coverage and delivery time for each type of service.



### Tracking

Receives reference or tracking number and return delivery status.



### Pick up

Receive request for pick up.



### Insurance

It allows to insure the shipment.

## Tracking number printing

Electronic systems for printing guides as an alternative to the documentation web service

# RETAIL

We offer logistic solutions that allow us to integrate e-commerce websites with our technological tools in an agile, clear and secure way generating savings in time and costs of implementation and operation.

## Solutions

- Dedicated pick up
- Status homologation
- Tracking by reference
- Tracking from websites
- Personalized waybills
- Transactional email to consignee
- Customized performance reports





# DOMESTIC SERVICES

# EXPRESS SERVICE



Perfect for documents and packages with the best delivery time from the next business day.\*

- Pick up at home, office or drop off at service points.
- Home, office or service points delivery (Hold at location).
- Weight covered by waybill 1 kg.
- For overweight, each excess kg or fraction is considered.
- Maximum weight per piece 70 kg (physical or volumetric).
- Delivery time: 24 to 48 hours

	Area 1	Area 2	Area 3	Area 4	Area 5	Area 6	Area 7	Area 8
<b>Guide up to 1 kg</b>	\$204.01	\$219.15	\$231.16	\$241.55	\$271.60	\$295.70	\$311.37	\$366.87
<b>Overweight Per additional kg or fraction</b>	\$27.68	\$30.24	\$32.63	\$37.54	\$82.44	\$86.65	\$97.46	\$119.50

\* Prices expressed in local currency, include VAT, do not include fuel surcharges. Excess weight and dimension invalidate delivery times. Consult the coverage and frequency of delivery in redpack.com. The guides are valid for 12 months. Information subject to change without prior notice. Effective January 2nd, 2023.

# ECOEXPRESS SERVICE



Service for shipments less sensitive to delivery time, with preferential rates.\*\*

- Pick up at home, office or drop off in service points.
- Home, office or service points delivery (Hold at location).
- For overweight, each excess kg or fraction is considered.
- Maximum weight per piece 70 kg (physical or volumetric).
- Delivery time: 2 to 5 business days.

	Area 1	Area 2	Area 3	Area 4	Area 5	Area 6	Area 7	Area 8
<b>Guide up to 1 kg</b>	\$183.19	\$192.35	\$199.68	\$212.67	\$247.50	\$275.67	\$303.83	\$360.13
<b>Guide up to 5 kg</b>	\$218.94	\$229.74	\$242.22	\$266.21	\$307.79	\$340.69	\$373.59	\$518.57
<b>Overweight Per additional kg or fraction</b>	\$10.64	\$11.05	\$12.05	\$15.45	\$17.45	\$18.88	\$20.35	\$39.60

\*\*Prices expressed in local currency, include VAT, do not include. Excess weight and dimension invalidate delivery times. Consult the coverage and frequency of delivery in redpack.com. The guides are valid for 12 months. Information subject to change without prior notice. Effective January 2nd, 2023.

# METROPOLITAN SERVICE



Ideal for documents and light packages with origin and destination in the same city. Available in the main cities of the country. \*\*\*

- Pick up at home, office or drop off at service points.
- Home, office or service points delivery (Hold at location).
- Weight covered by waybill 0.5 kg.
- For overweight, each 0.5 kg or excess fraction is considered.
- Maximum weight per piece 5 kg (physical or volumetric).
- Maximum dimension up to 30 cm from one of its sides.
- Delivery time: 24 to 72 hours.
- Valid only in the metropolitan areas of Mexico City, Guadalajara and Monterrey.

	<b>Price</b>
<b>Guide up to 1 kg</b>	\$84.83
<b>Overweight. Per additional 1 kg or fraction.</b>	\$6.08

\*\*\*Prices expressed in local currency, include VAT, do not include fuel charges. Excess weight and dimension invalidate delivery times. Consult the coverage and frequency of delivery in redpack.com. The guides are valid for 12 months. Information subject to change without prior notice. Effective January 2nd, 2023.

# PREPAID



All our national services are available on a prepaid basis, with benefits depending on the volume of purchase.

Prepaid waybills are valid for 12 months.

For more information, contact your logistics advisor or call 55 3682 4040.











# DOMESTIC ADDITIONAL SERVICES AND CHARGES

## Additional free of charge

Concept	Description
Collection	Request your pick up at redpack.com. For pick ups of more than 25 packages it is required to manage 24 hours in advance
Deposit on service points	Deliver your shipments at our service points. Locate the one closest to you at redpack.com
Receipt on service points	Receive your packages at Redpack service points with the service hold at location
Red benefits	Use this shipping management platform from where you can request waybills, receive invoices, document and generate waybills.

## Additional Charges

Concept	Description	Rate
Fuel surcharge	Charge applicable to national and international services. It is a percentage indexed to the price of fuels established by PEMEX.	Variable monthly rate.
Optional Insurance	Optional charge to secure the event. The insurance covers the entire merchandise, above the standard liability, covering the amount necessary to repair or replace a shipment in case of loss or damage. The maximum amount to be insured per guide is \$200,000.00	<p>\$ 54.79 plus the deductible amount indicated by the insurer, in the case of shipments with a value of goods up to \$ 3,000.99 before VAT.</p> <p>1.5% of the value of the invoice of the good before VAT, plus the deductible amount indicated by the insurer plus VAT, in the case of shipments with a value of good from \$3,001.00</p>
Cost coverage	Charge for those destinations that are difficult to access or complex with an established frequency of visit. The Express service covers 1 kg and the Ecoexpress service covers 5 kg. Overweight is charged per additional kg.	<p>Express \$189.91 Additional kg \$9.22</p> <p>Ecoexpress \$157.77 Additional kg \$7.65</p>

# DOMESTIC ADDITIONAL SERVICES AND CHARGES

## Additional Charges

Concept	Description	Rate
Special coverage	Additional charge to destinations with sporadic visits.	Variable cost according to distance.
Guide replacement	Additional charge for guide replacement.	\$44.84 plus fuel surcharge corresponding to the type of service and in effect at the time of exchange.
Packing	Redpack packaging charge: envelopes, boxes, and packing material.	Variable cost per selected package
Weight and dimension exceeded	Charge per piece that exceeds weights and measures established for each service.	\$289.24
Rebilling	Charge for correction in the invoice.	\$292.28
Change of address or destination	Charge for change of address or destination of the shipment before it is delivered. It covers 5 kg and the overweight is charged per additional kg.	\$119.07 Additional kg \$10.44
Return	Charge for requesting the return of the shipment to origin. Applies in case of not being able to deliver it to the submitter. It covers 5 kg and the overweight is charged per additional kg.	\$119.07 Additional kg \$10.44
Document return	Charge for sending documents or packages to their destination and receiving back documents signed or stamped. Return time 120 hours.	\$146.09 plus shipping cost
Fractional guide	Applicable charge when there is a guide with certain kg covered and it is required to split it into several packages. Each package will generate an additional charge. Maximum 15 pieces. At the service points, the maximum delivery weight is 200 kg per multipiece.	\$43.82 per piece

Prices expressed in national currency. Include VAT. Information subject to change without prior notice.  
Effective January 2nd, 2023



# INTERNATIONAL SERVICES

# INTERNATIONAL SERVICES



Service that meets global distribution needs for export and import shipments, with defined delivery times for more than 220 countries.

- Door-to-door service.
- Coverage from more than 220 countries.
- Traceability.
- Support in the customs clearance process.\*
- Accompaniment in the export and import process.
- Advice on requirements and documents necessary for export and import process.

\*Subject to confirming type of merchandise and its value.

## COURIER SERVICES

- Exclusive documents.
- Weight: 0.5 to 2 kg.
- Transported documents have no commercial value.

## PARCEL SERVICES

- Packages up to 68 kg (150 lb).
- Maximum dimensions per package: 120 x 80 x 80 cm.
  - Subject to confirm real weights and measurements, for volumetric weight purposes.
- Delivery times: air service 1 to 4 days.
  - Subject to confirm real weights and measurements, for volumetric weight purposes.
- Service days: monday to friday.
  - Saturday service available in some countries and territories, with additional charge.

# INTERNATIONAL SERVICES

## INTERNATIONAL CARGO LTL

Service for goods that exceed the weight limit of 68 kg per piece and are transported from one country to another by air or ground on pallets.

### Services

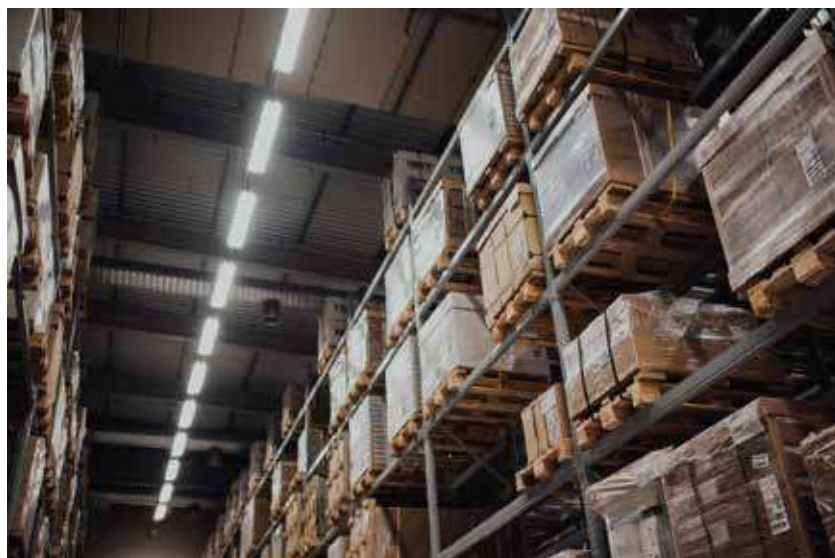
- Pick up and home delivery.
  - Door-to-door: Pick up at the door of your business, with customs procedures at origin and destination to deliver at final destination.
  - Door-to-airport: Receive the same level of service from pick up to the destination airport. It does not include customs clearance or delivery to final destination.
  - Airport-to-airport: Pick up at origin airport and delivery at final destination airport. Optional customs clearance.
- Temporary storage.
- Maneuvers.
- Electronic POD.
- The cargo will have space reserved and confirmed until its final destination.

### Foreign trade and customs

- Advice on foreign trade.
- Wide portfolio of services in the field of international logistics and transport with the advantage of integrating all transport, customs and storage solutions in a single partner.
- Cross border.

### Weights and dimensions

- Minimum 68 kg per pallet or piece.
- Maximum 999 kg per pallet.
- Measurements per pallet: 120 x 120 x 160 cm



# ECOEXPRESS U.S.

New service for ground shippings to the United States with the most economical rate. Ideal for documents and packages.

- Pick up at home, office or drop off in service points.
- Weight covered by the waybill 0.5 kg.
- For overweight, each excess kg or fraction is considered.
- Maximum weight per piece 30 kg (physical or volumetric).
- Delivery time: from the 5th working day.
- It does not cause VAT because it is a ground shipment.

	Area 1 y 2	Area 3	Area 4	Area 5	Area 6	Area 7	Area 8	Area 9
<b>Up to 0.5 kg</b>	\$19.25	\$19.94	\$20.38	\$20.88	\$21.26	\$21.61	\$22.18	\$28.40
<b>Up to 1 kg</b>	\$20.96	\$21.78	\$22.34	\$24.52	\$29.97	\$32.77	\$37.47	\$55.36
<b>Up to 1.5 kg</b>	\$21.17	\$22.24	\$23.53	\$26.17	\$34.17	\$38.14	\$42.49	\$64.14
<b>Up to 2 kg</b>	\$21.38	\$22.34	\$24.20	\$26.81	\$38.31	\$43.16	\$48.49	\$73.90
<b>Up to 2.5 kg</b>	\$21.61	\$22.43	\$24.43	\$34.21	\$43.18	\$49.41	\$55.82	\$84.02
<b>Up to 3 kg</b>	\$22.11	\$24.83	\$24.93	\$37.79	\$47.34	\$55.11	\$62.16	\$93.78
<b>Up to 3.5 kg</b>	\$22.24	\$25.83	\$28.59	\$40.84	\$51.54	\$60.23	\$69.24	\$104.71
<b>Up to 4 kg</b>	\$23.97	\$26.65	\$29.59	\$43.45	\$55.68	\$64.85	\$76.47	\$115.93
<b>Up to 4.5 kg</b>	\$28.19	\$32.85	\$34.88	\$51.75	\$65.50	\$78.77	\$91.67	\$136.87
<b>Up to 5 kg</b>	\$29.66	\$34.65	\$39.88	\$55.11	\$71.06	\$84.83	\$98.06	\$146.40
<b>Up to 5.5 kg</b>	\$30.95	\$36.39	\$41.53	\$57.81	\$75.93	\$88.07	\$101.37	\$151.48
<b>Up to 6 kg</b>	\$32.31	\$38.14	\$43.49	\$60.92	\$79.94	\$92.73	\$106.17	\$158.76
<b>Up to 6.5 kg</b>	\$33.40	\$39.90	\$45.39	\$63.81	\$82.85	\$94.43	\$108.83	\$162.83
<b>Up to 7 kg</b>	\$34.65	\$42.13	\$48.01	\$67.34	\$88.07	\$100.38	\$115.62	\$171.53
<b>Up to 7.5 kg</b>	\$35.61	\$43.87	\$50.08	\$70.41	\$92.32	\$105.36	\$121.51	\$180.33
<b>Up to 8 kg</b>	\$36.22	\$45.08	\$52.12	\$73.36	\$96.96	\$110.33	\$127.36	\$189.19
<b>Up to 8.5 kg</b>	\$36.95	\$46.02	\$53.21	\$75.18	\$101.09	\$115.24	\$133.20	\$197.94
<b>Up to 9 kg</b>	\$38.23	\$46.67	\$54.19	\$76.47	\$103.60	\$119.38	\$139.15	\$206.85
<b>Overweight. Per additional kg or fraction.</b>	\$0.97	\$1.35	\$1.76	\$2.53	\$4.15	\$4.99	\$6.07	\$8.80

Prices expressed in U.S. dollars, rate exempt of VAT. The fuel surcharges is calculated additionally according to the type of service. Excess weight and dimension invalidate delivery times. Restrictions apply. Check prohibited items, coverage and delivery frequency at redpack.com. Information subject to change without prior notice. Effective January 2nd, 2023.

# EXPORT

	Weight kg	USA	LATAM	Europe	Asia & Oceania	Rest of the world	Canada
		A	B	C	D	E	F
<b>Envelope</b>	0.5	\$48.40	\$54.10	\$55.20	\$64.60	\$81.00	\$43.01
<b>Package</b>	0.5	\$58.20	\$79.50	\$81.30	\$90.50	\$106.60	\$50.02
	1	\$64.30	\$83.40	\$85.90	\$96.90	\$121.60	\$55.35
	1.5	\$70.40	\$87.30	\$90.50	\$103.30	\$136.60	\$60.67
	2	\$76.50	\$91.20	\$95.10	\$109.70	\$151.60	\$66.00
	2.5	\$82.60	\$95.10	\$99.70	\$116.10	\$166.60	\$71.32
	3	\$89.60	\$102.40	\$107.50	\$129.80	\$179.40	\$77.36
	3.5	\$96.60	\$109.70	\$115.30	\$143.50	\$192.20	\$83.41
	4	\$103.60	\$117.00	\$123.10	\$157.20	\$205.00	\$89.45
	4.5	\$110.60	\$124.30	\$130.90	\$170.90	\$217.80	\$95.49
	5	\$117.60	\$131.60	\$138.70	\$184.60	\$230.60	\$101.53
	5.5	\$122.30	\$141.00	\$147.00	\$199.00	\$253.40	\$106.23
	6	\$127.00	\$150.40	\$155.30	\$213.40	\$276.20	\$110.93
	6.5	\$131.70	\$159.80	\$163.60	\$227.80	\$299.00	\$115.63
	7	\$136.40	\$169.20	\$171.90	\$242.20	\$321.80	\$120.34
	7.5	\$141.10	\$178.60	\$180.20	\$256.60	\$344.60	\$125.04
	8	\$145.80	\$188.00	\$188.50	\$271.00	\$367.40	\$129.74
	8.5	\$150.50	\$197.40	\$196.80	\$285.40	\$390.20	\$134.44
	9	\$155.20	\$206.80	\$205.10	\$299.80	\$413.00	\$139.14
	9.5	\$159.90	\$216.20	\$213.40	\$314.20	\$435.80	\$143.84
	10	\$164.60	\$225.60	\$221.70	\$328.60	\$458.60	\$148.54
	10.5	\$169.40	\$231.50	\$229.80	\$339.40	\$471.10	\$152.66
	11	\$174.20	\$237.40	\$237.90	\$350.20	\$483.60	\$156.78
	11.5	\$179.00	\$243.30	\$246.00	\$361.00	\$496.10	\$160.90
	12	\$183.80	\$249.20	\$254.10	\$371.80	\$508.60	\$165.02
	12.5	\$188.60	\$255.10	\$262.20	\$382.60	\$521.10	\$169.13
	13	\$193.40	\$261.00	\$270.30	\$393.40	\$533.60	\$173.25
	13.5	\$198.20	\$266.90	\$278.40	\$404.20	\$546.10	\$177.37
	14	\$203.00	\$272.80	\$286.50	\$415.00	\$558.60	\$181.48
	14.5	\$207.80	\$278.70	\$294.60	\$425.80	\$571.10	\$185.60
	15	\$212.60	\$284.60	\$302.70	\$436.60	\$583.60	\$189.72
	15.5	\$217.40	\$290.50	\$310.80	\$447.40	\$596.10	\$193.83
	16	\$222.20	\$296.40	\$318.90	\$458.20	\$608.60	\$197.95
	16.5	\$227.00	\$302.30	\$327.00	\$469.00	\$621.10	\$202.07
	17	\$231.80	\$308.20	\$335.10	\$479.80	\$633.60	\$206.18
	17.5	\$236.60	\$314.10	\$343.20	\$490.60	\$646.10	\$210.30
	18	\$241.40	\$320.00	\$351.30	\$501.40	\$658.60	\$214.42
	18.5	\$246.20	\$325.90	\$359.40	\$512.20	\$671.10	\$218.53
	19	\$251.00	\$331.80	\$367.50	\$523.00	\$683.60	\$222.65
	19.5	\$255.80	\$337.70	\$375.60	\$531.30	\$696.10	\$226.76
	20	\$260.60	\$343.60	\$383.70	\$531.30	\$708.60	\$230.88
<b>Overweight.</b>	21-44	\$12.70	\$17.50	\$19.10	\$25.30	\$35.40	\$11.25
<b>Per additional</b>	45-70	\$12.10	\$17.40	\$18.50	\$23.70	\$33.90	\$10.73
<b>kg or fraction.</b>	71 +	\$12.10	\$17.40	\$18.50	\$23.70	\$33.90	\$10.73

Prices are in US dollars and do not include VAT, fuel surcharge, taxes and duties. Other additional charges may apply. Excess weight and dimension invalidates delivery times. Verify coverage and delivery frequency with your logistics advisor. Restrictions apply. Information subject to change without prior notice. Effective January 2nd, 2023.



# IMPORT

	Weight kg	USA	LATAM	Europe	Asia & Oceania	Rest of the world	Canada
		A	B	C	D	E	F
<b>Envelope</b>	0.5	\$59.30	\$78.00	\$86.90	\$76.50	\$107.20	\$78.20
<b>Package</b>	0.5	\$79.70	\$106.60	\$112.70	\$119.80	\$157.60	\$95.00
	1	\$90.00	\$120.60	\$127.60	\$133.80	\$176.40	\$106.40
	1.5	\$100.30	\$134.60	\$142.50	\$147.80	\$195.20	\$117.80
	2	\$110.60	\$148.60	\$157.40	\$161.80	\$214.00	\$129.20
	2.5	\$120.90	\$162.60	\$172.30	\$175.80	\$232.80	\$140.60
	3	\$131.10	\$175.80	\$187.10	\$189.10	\$251.10	\$151.60
	3.5	\$141.30	\$189.00	\$201.90	\$202.40	\$269.40	\$162.60
	4	\$151.50	\$202.20	\$216.70	\$215.70	\$287.70	\$173.60
	4.5	\$161.70	\$215.40	\$231.50	\$229.00	\$306.00	\$184.60
	5	\$171.90	\$228.60	\$246.30	\$242.30	\$324.30	\$195.60
	5.5	\$180.70	\$241.90	\$261.00	\$255.80	\$342.00	\$205.40
	6	\$189.50	\$255.20	\$275.70	\$269.30	\$359.70	\$215.20
	6.5	\$198.30	\$268.50	\$290.40	\$282.80	\$377.40	\$225.00
	7	\$207.10	\$281.80	\$305.10	\$296.30	\$395.10	\$234.80
	7.5	\$215.90	\$295.10	\$319.80	\$309.80	\$412.80	\$244.60
	8	\$224.70	\$308.40	\$334.50	\$323.30	\$430.50	\$254.40
	8.5	\$233.50	\$321.70	\$349.20	\$336.80	\$448.20	\$264.20
	9	\$242.30	\$335.00	\$363.90	\$350.30	\$465.90	\$274.00
	9.5	\$251.10	\$348.30	\$378.60	\$363.80	\$483.60	\$283.80
	10	\$259.90	\$361.60	\$393.30	\$377.30	\$501.30	\$293.60
	10.5	\$265.80	\$375.10	\$408.20	\$387.60	\$516.40	\$301.90
	11	\$271.70	\$388.60	\$423.10	\$397.90	\$531.50	\$310.20
	11.5	\$277.60	\$402.10	\$438.00	\$408.20	\$546.60	\$318.50
	12	\$283.50	\$415.60	\$452.90	\$418.50	\$561.70	\$326.80
	12.5	\$289.40	\$429.10	\$467.80	\$428.80	\$576.80	\$335.10
	13	\$295.30	\$442.60	\$482.70	\$439.10	\$591.90	\$343.40
	13.5	\$301.20	\$456.10	\$497.60	\$449.40	\$607.00	\$351.70
	14	\$307.10	\$469.60	\$512.50	\$459.70	\$622.10	\$360.00
	14.5	\$313.00	\$483.10	\$527.40	\$470.00	\$637.20	\$368.30
	15	\$318.90	\$496.60	\$542.30	\$480.30	\$652.30	\$376.60
	15.5	\$324.80	\$510.10	\$557.20	\$490.60	\$667.40	\$384.90
	16	\$330.70	\$523.60	\$572.10	\$500.90	\$682.50	\$393.20
	16.5	\$336.60	\$537.10	\$587.00	\$511.20	\$697.60	\$401.50
	17	\$342.50	\$550.60	\$601.90	\$521.50	\$712.70	\$409.80
	17.5	\$348.40	\$564.10	\$616.80	\$531.80	\$727.80	\$418.10
	18	\$354.30	\$577.60	\$631.70	\$542.10	\$742.90	\$426.40
	18.5	\$360.20	\$581.70	\$646.60	\$552.40	\$758.00	\$434.70
	19	\$366.10	\$581.70	\$661.50	\$562.70	\$773.10	\$443.00
	19.5	\$372.00	\$581.70	\$676.40	\$573.00	\$788.20	\$451.30
	20	\$377.90	\$581.70	\$691.30	\$583.30	\$803.30	\$459.60
<b>Overweight.</b>	21-44	\$19.00	\$27.70	\$33.40	\$33.00	\$46.20	\$23.90
<b>Per additional</b>	45-70	\$18.30	\$27.10	\$32.80	\$31.80	\$44.00	\$23.00
<b>kg or fraction.</b>	71 +	\$18.30	\$27.10	\$32.80	\$31.80	\$44.00	\$23.00

Prices are in US dollars and do not include VAT, fuel surcharges, taxes and duties. Other additional charges may apply. Excess weight and dimension invalidate delivery times. Verify coverage and delivery frequency with your logistics advisor. Restrictions apply. Information subject to change without prior notice. Effective January 2nd, 2023.

# INTERNATIONAL RATE AREAS

Country	Area	Country	Area
USA	A	Trinidad and Tobago	B
Anguila	B	Uruguay	B
Antigua	B	Venezuela	B
Argentina	B	Germany	C
Aruba	B	Andorra	C
Bahamas	B	Austria	C
Barbados	B	Belgium	C
Belize	B	Denmark	C
Bermuda	B	Vatican City	C
Bolivia	B	Spain	C
Bonaire	B	Finland	C
Brazil	B	France	C
Chile	B	Greece	C
Colombia	B	Holland	C
Costa Rica	B	England	C
Curazao	B	Ireland	C
Dominica	B	Italy	C
Ecuador	B	Liechtenstein	C
El Salvador	B	Luxembourg	C
Granada	B	Malta	C
Guadalupe	B	Monaco	C
Guatemala	B	Norway	C
French Guyana	B	Portugal	C
Guyana	B	Sweden	C
Haiti	B	Switzerland	C
Honduras	B	Australia	D
Cayman Islands	B	Brunei	D
Turks and Caicos Islands	B	China	D
British Virgin Islands	B	South Korea	D
Virgin Islands US	B	Philippines	D
Jamaica	B	Hong Kong	D
Martinique	B	India	D
Montserrat	B	Indonesia	D
Nicaragua	B	Japan	D
Panama	B	Macau	D
Paraguay	B	Malaysia	D
Peru	B	Myanmar	D
Puerto Rico	B	New Zealand	D
Dominican Republic	B	Singapore	D
St. Kitts and Nevis	B	Thailand	D
St. Martin	B	Taiwan	D
St. Vincent	B	Vietnam	D
St. Lucia	B	Rest of the world	E
Suriname	B	Canada	F

Area	A y F	B y C	D	E
<b>Transit time</b>	2 a 4 business days	3 a 5 business days	4 a 6 business days	5 a 9 business days

# INTERNATIONAL ADDITIONAL SERVICES AND CHARGES

Concept	Description
Special services	Immediate pick ups and deliveries at specified times. Urgent shipments. Special shape shipments. Restricted shipments or specific measures.
Delivery time	Deliveries from monday to friday during open hours.
Customs and clearance	Customs clearance process at destination. Taxes and import duties generated are charged to the origin account.
Critical time	Next day delivery with courier on board.
Merchandise restrictions	Applies to all merchandise and/or documents limited or prohibited by law and regulations by national or international regulations (IATA).
Optional transport insurance	Cost 1.5% on declared value. Maximum sum insured per shipment \$ 150,000.00 M.N. If the content of the shipment has a declared value greater than 30 SMCDMX, it will travel insured. The insurance covers the declared value of the content after payment of the deductible, above the standard liability, covering the amount necessary to repair or replace a shipment in case of loss or damage.
Exchange rate and fuel surcharge	The fuel surcharge is variable according to the date of shipment, it applies to all international services. Variable value exchange rate.
Proforma invoice	Every package must be accompanied by 4 copies of a commercial or proforma invoice.
Delivery area and times	The delivery time expressed does not consider the processing time by the customs authorities.

## Additional Charges

Concept	Rate
Address correction	USD 22.04 per shipment
Saturday deliveries and pick ups	USD 67.28 per shipment
Hazardous Materials – Accessible	USD 156.60 or USD 1.87 per kg. Whichever is greater.
Hazardous materials – inaccessible	USD 132.24 or USD 1.60 per kg. Whichever is greater.
Selection of customs agent	USD 12.76 or USD 0.58 per kg. Whichever is greater.
Dry Ice	USD 6.96 per shipment
Declared value for transport	USD 1.29 for each USD 100.00 of declared value, the first USD 100.00 or USD 23.20 per Kg (whichever is greater) are free.
Unstackable merchandise	An additional charge of USD 254.04 will be applied to each pallet that is considered unstackable when any of the following conditions are met: 1. The customer designates the merchandise as unstackable, placing a label on the pallet. 2. The pallet has a cone or empty boxes at the top, placed by the customer. 3. The deck has an obtuse or irregular shape.

Prices are in US dollars and do not include VAT, fuel surcharge, taxes and duties. Other additional charges may apply. Not all services are offered in all countries. Restrictions apply. Information subject to change without prior notice. Effective January 2nd 2023.

For more information on international services, contact your logistics advisor, write to us at [ventasinternacional@redpack.com.mx](mailto:ventasinternacional@redpack.com.mx) or call 55 3682 4040.

# PROHIBITED ITEMS

Regularly, the authority visits our facilities and conducts random checks on the shipments we transport. Likewise, we have reviews in road sections and by the aeronautical authority. Please consider this information to prevent your shipment being confiscated.

It is essential to allow the logistic advisor to review the content on our service points to validate that the article is not in the following list.



# DANGEROUS MATERIALS

The following dangerous goods will not be transported on board aircraft for any reason:

- Explosives that can ignite or decompose if subjected to temperatures of 75°C for 48 hours.
- Explosives containing both chlorates and ammonium salts.
- Explosives containing mixtures of phosphorous chlorates.
- Solid explosives classified as extremely sensitive to mechanical shock. Examples: Liquid explosives classified as moderately sensitive to mechanical shock.
- Liquid explosives classified as extremely sensitive to mechanical shock
- Any substance or object that, as delivered for transport, can produce a dangerous emanation of heat or gas under the normal conditions of air transport.
- Flammable solids and organic peroxides that, in previous tests, have explosive properties.
- All those specified by the aeronautical authority.
- Live infected animals.
- Substances that are delivered for transport in a liquid state at 100°C or in a solid state at 240°C or at higher temperatures in both cases.
- Radioactive material contained in vented type B (M) packages, radioactive material contained in packages requiring external cooling by an auxiliary cooling system, radioactive material contained in packages subject to operational controls during transport, packages containing liquid pyrophoric material radioactive and radioactive material that is both explosive.
- Any substance and article that, according to the procedures and specifications approved by the aeronautical authority, are classified as dangerous goods in the following terms:



Explosives



Gases compressed refrigerated, liquefied or dissolved under pressure



Flammable liquids



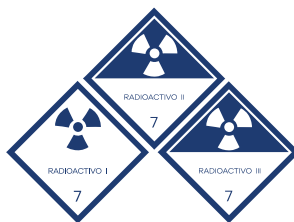
Flammable Solids



Oxidizers and organic peroxides



Acute toxics (poisons) and infectious agents



Radioactive



Corrosive



Various

# PREPARE YOUR SHIPMENT STEP BY STEP

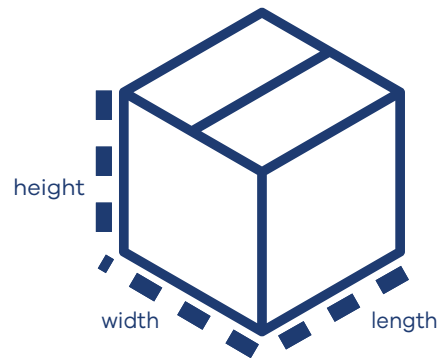
1. Check the weight of your shipment:

## CALCULATE THE VOLUMETRIC WEIGHT OF YOUR SHIPPING WITH THE FOLLOWING FORMULA:

$$\text{LENGTH}^* \times \text{HEIGHT}^* \times \text{WIDTH}^* / 5,000 = \text{KG OF YOUR SHIPMENT}$$

\*In centimeters

When the result of this formula is higher than the physical weight, the rate of your shipment will be calculated based on the volumetric weight.



2. Identify the city or country of origin of your shipment

3. Locate the destination of your shipment in the areas tables

4. Select the service that suits your needs. If your shipment is domestic, locate in the "Domestic Rate Areas" table the destination of your shipment and identify the rate by weight. If your shipment is international, locate in the "International Rate Areas" table the destination of your shipment and identify the rate by weight. If your shipment exceeds 20 kg, use the additional kg rate.

5. Match the weight of your shipment with the selected service

## MAXIMUM AND MINIMUM WEIGHTS FOR INTERNATIONAL SHIPMENTS

Envelopes: Maximum 500 gr each

Package and/or box: 68 kg per piece

Maximum weight per guide 500 kg

Maximum measurement per piece: Length 1.50 m, Width 1.80 m, Height 1.20 m

For more information contact your logistics advisor or call 55 3682 4040.

# PACKAGING SOLUTIONS

## OUTER PACKAGING



- Ensures that the box is adequate to the weight and size of the content, so that it neither collapses or bursts.
- Preferably use new boxes of rigid material, without labels or cracks from previous content.



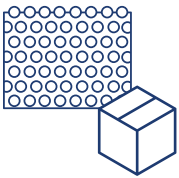
- Use thick adhesive tape with excellent adhesion.



- Avoid rope or strap.

- Only place the tracking number with required data and the respective labels for the correct handling and care of the shipment.

## INNER PACKAGING



- Wrap each item individually.
- Uses shock absorbing material such as polybubble and ensures that the item is protected or immobile inside the box.
- Place the items in the box, placing it away from corners and walls, fill the empty spaces with packing peanuts (which are just small pieces of styrofoam) to avoid movement during transport.



In case you pack your shipment in flyer (oxobiodegradable package), the item must not exceed a weight of 4 kg or a thickness of 5 cm.

We offer you different packaging to make your shipments travel safer.

Material	Size	Rate
Envelope	24 x 31.5 cm	\$10.00
Mini box	25 x 15 x 15 cm	\$25.00
Small box	30 x 23 x 20 cm	\$45.00
Medium box	33 x 33 x 22 cm	\$50.00
Big box	45 x 30 x 27 cm	\$55.00
Extra large box	55 x 46 x 36 cm	\$70.00
Filling material	Bag	\$50.00
Bubble wrap	Meter	\$20.00
Stretch plastic	Meter	\$10.00

Prices of packaging material expressed in local currency, including VAT. Information subject to change without prior notice. Effective January 2nd, 2023.

# SERVICE POINTS



Redpack has more than 150 service points throughout the nation. Visit us and learn about the services and benefits we offer in them.

## **Hold at location**

Service through which you can drop off your shipments directly at our service points, or your shipments can be delivered to them as an alternative with a longer schedule for you to pick them up.

Locate closest service point to you at [redpack.com](http://redpack.com)

## **Packaging**

We offer you different packaging to make your shipments travel safer.





***REDPACK***®

**SERVICES AND RATES 2023**



55 3682 4040



[Redpack.com.mx](https://Redpack.com.mx)



Redpack

